

Video Security

Dome Cameras | eneo Vandalism-Proof Fix Domes

VKCD-1324/IR

1/3" Pixim Day/Night Dome Camera, IR LEDs, F1.2/2.8-10mm, 12VDC/24VAC, 540TVL

Art-No. 92169



Features

Digital Pixel System (DPS)

Wide Dynamic Range: 102dB, 120dB max.

Built-in Lens F1.2/2.8-10mm with DC Iris Control

Sensitivity of 1.7Lux (F1.2 / Colour)

Removable IR Cut Filter

Digital Noise Reduction (DNR)

Adjustable Low-Speed Shutter (DSS)

Automatic White Balance (ATW)

IR Illumination by 35 integrated 850nm LEDs

Surface Mount / Clear Bubble

Weatherproof Camera / Protection Rating: IP66

Supply Voltage: 12VDC/24VAC

Specifications

Video standard	PAL/NTSC
System	day&night
Sensor size	1/3"
Imager	Pixim, CMOS, DPS Technology
Active picture elements	Approx. 400,000, (H) 720 x (V) 540 (eff.)
Synchronization	Internal/Line-lock
Signal-to-noise ratio	48dB (AGC OFF)
Sensitivity (at 50% video signal)	1,4Lux, at colour, 0.38Lux (B&W). VT measurement result at F1.2
Horizontal resolution	540TVL
Rotation range	manual: 360°
Automatic gain control (AGC)	On/Off switchable
Integration rate	yes
Low speed shutter (DSS)	2 ~ 32 fps.
Wide dynamic range	On/Off switchable
Digital Noise Reduction (DNR)	yes, On/Off switchable
Flickerless function	On/Off switchable
White balance	Automatic and manual (ATW/AWB)

(Specifications continued)

White balance (ATW)	2000K ~ 8000K
Backlight compensation	WDR, BLC, 4 presets: low/middle/high/custom (user adjustment) / BLC: Center area / upper 1/3, middle 1/3, lower 1/3
Aperture Correction (APC)	Horizontal and vertical
IR cut filter	yes, Motorized, switchable filter. Automatic function depend on the amount of light. In removed filter position, the colour signal, will be switched OFF
Video outputs (type)	VBS, CVBS
Video output	1 Vp-p, (C)VBS, 75ohms, BNC
Lens mount	integrated lens
Lens type	varifocal
Lens	F1.2 ~ 270/2.8 ~ 10mm with galvanometer driven iris, manual Zoom/Fokus adjustment
Application range	security, industrial
Nominal format size	1/3"
Aspherical technology	yes
Focal length	2,8-10mm
Horizontal angle of view	27-82°
Iris control	DC
MOD (Minimum object distance)	0,1m
Filter screw size	not available
Mount	n/a
Illumination	35 LEDs 850nm. Integrated light sensor for On/Off switching of the illumination
Illumination range	approx. 35m (at a good light reflexion and 40% Videosignal)
OSD function control	Preset, Exposure, D&N, Picture Control, Lens Select (manual/DC), Mirror function (H+V), Synchronization, Shutter mode
Sharpness correction	selectable
Cable connection	Video (BNC), Power 12VDC or 24VAC (2-pin terminal)
Serial interfaces	no
Temperature range (Operation)	-10° ~ +50°C
Heater	no
Protection rating	IP66
Supply voltage	12VDC, 24VAC, 10 ~ 30VDC, 15 ~ 29VAC
Power consumption	10.0watts max.
Vandalism resistant	yes
Colour (bubble)	clear
Camera fixing	no
Mounting	wall mount, in-ceiling mount, surface mount
Housing	outdoor housing, Metal
Housing material	aluminium
Colour (housing)	Pantone Warm Gray 1C
Dimensions (HxWxD)	See drawing

VKCD-1324/IR

(Specifications continued)

Weight

approx. 1.0kg

Parts supplied

Mounting kit, Torx wrench key, Blind cover 3/4"

Accessories**92168 / IRCAM/WB2**

Wall Mount Kit for VKCD-1323/IR, VKCD-1322 and VKCD-1324/IR

92209 / IRCAM/CB1

Ceiling Mount Kit for VKCD-1323/IR, VKC-1322 and VKC-1324/IR

77773 / VT-PS12DCDT1

PSU 12VDC/1.0A, Regulated, Desktop Version, 1.8m Cables each w. open ends

70495 / VT-PS12DC-7

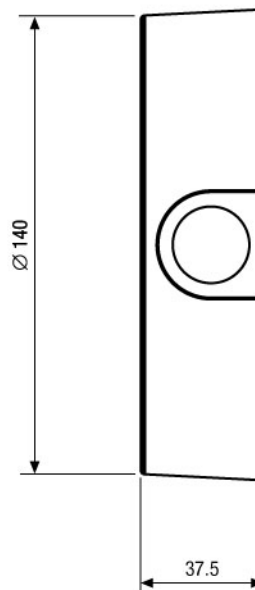
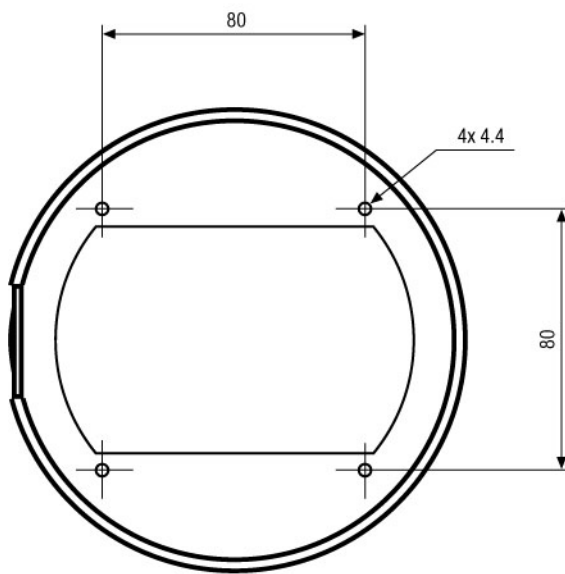
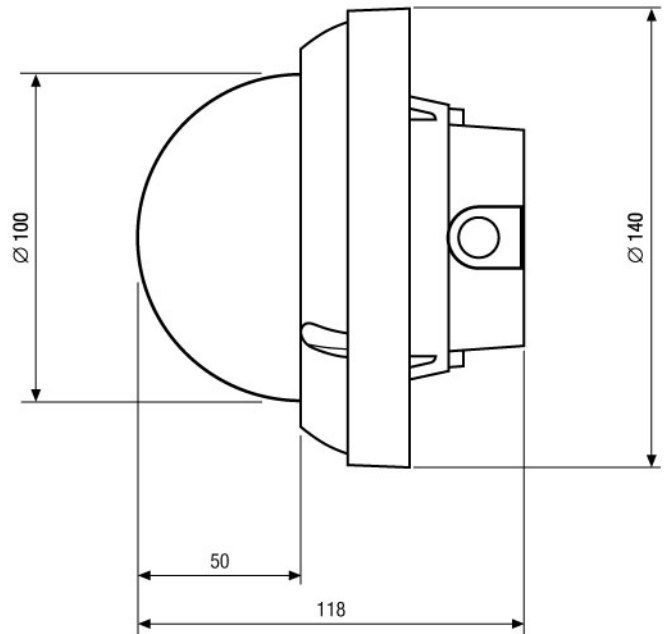
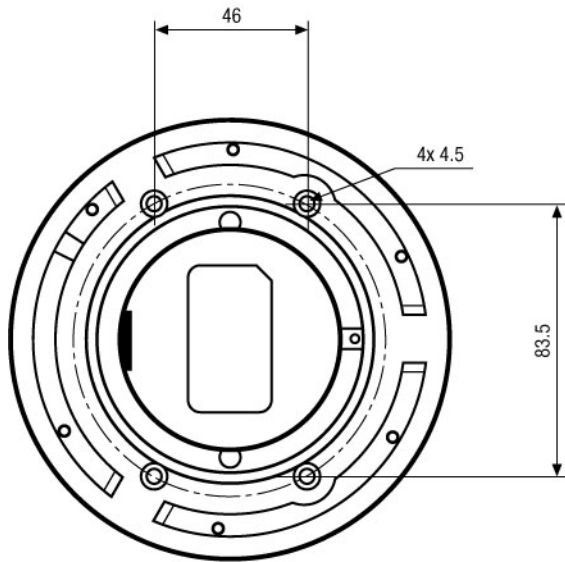
Plugable PSU w. Cont. & UK Mains plug-in 100-240VAC/12VDC-1.25A, Regulated

70527 / NE-132/AC24V

Power Supply Unit 230VAC/24VAC (1.0A)

88149 / 3/4" - M25X1.5

Thread Adapter 3/4" - Conduit Connection M25x1.5mm for Dome Surface Mount Housing



Maße/Dimensions: mm

SLD Security & Communications
 The Old Forge, Ockham Lane, Ockham, Surrey GU236PH England
 Phone +44.1483225633 · Fax +44.1483225634
 sales@sld.co.uk · www.sld.co.uk

